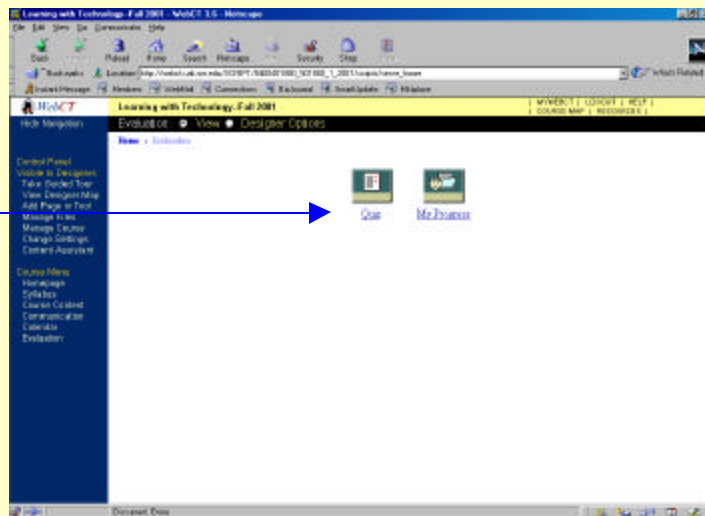


Quick Reference: WebCT 3.6 Course Evaluation Module

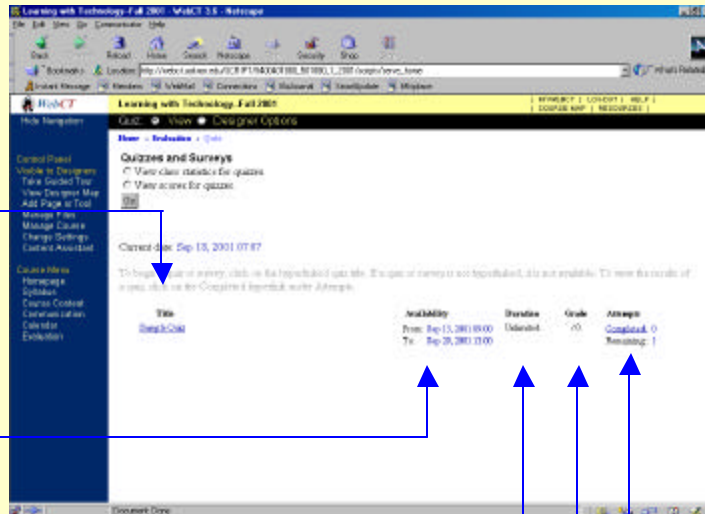
- After you have successfully logged into WebCT 3.6, you will want to explore the WebCT course modules that allow you to participate in on-line **Evaluation**. On-line evaluations can take many forms, such as: objective-type quizzes, surveys, etc.



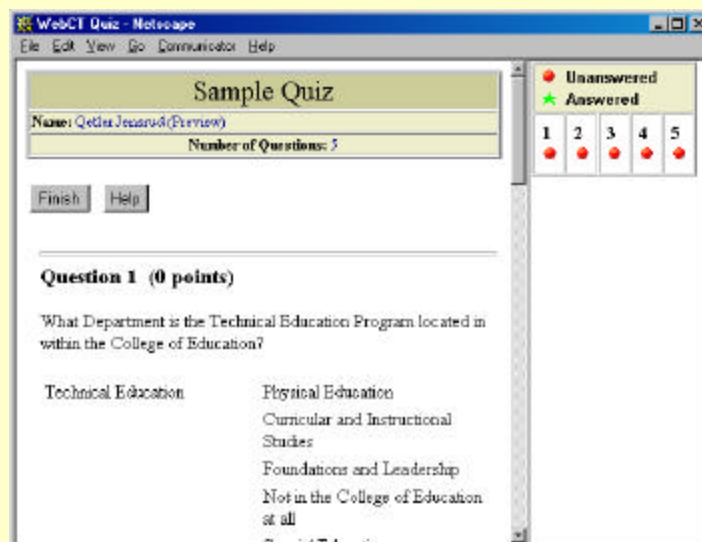
- One of the components in the Evaluation Module is Quizzes (which is a common tool utilized by instructors). Click on the icon labeled **Quiz** to participate in this function.



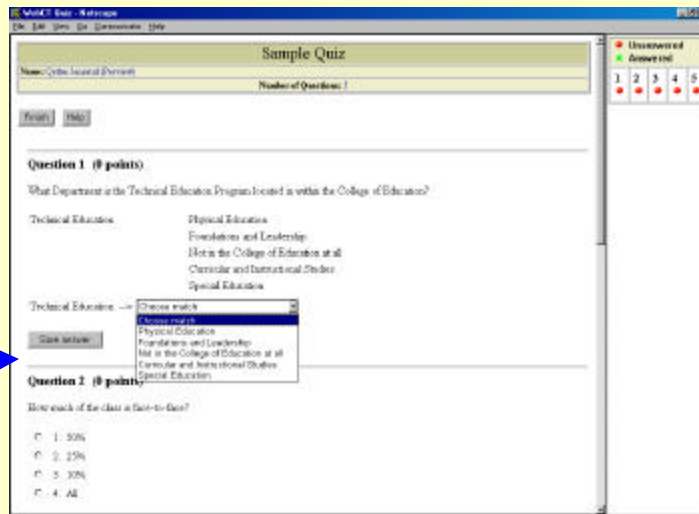
- Quizzes and Surveys:**
 This screen will give you the option of clicking on one instrument at a time. For this example there is only one quiz listed; however, you may have several listed for your particular course. Check the second column heading, labeled **Availability**, for the dates that this quizzing instrument will be available to you. The third column, labeled **Duration**, will inform you of the time limit you will have for completing this quizzing instrument. The fourth column, labeled **Grade**, informs you of the possible points for each quizzing instrument, and the last column, labeled **Attempts**, provides the learner with the number of attempts permitted and the remaining number of attempts. Click on the appropriate quiz to participate.



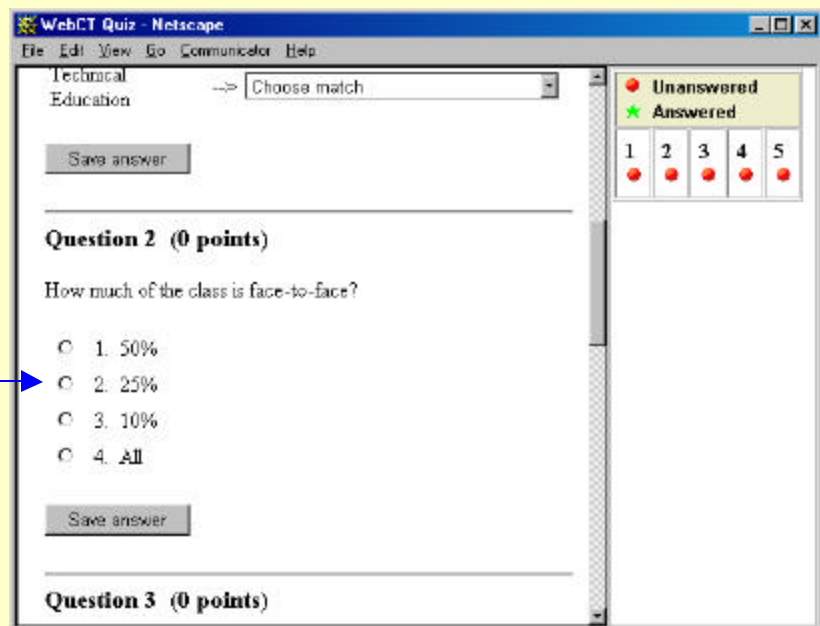
- Once you have arrived at this point, you will be in the test—remember this may be a timed test and time will be an important issue.



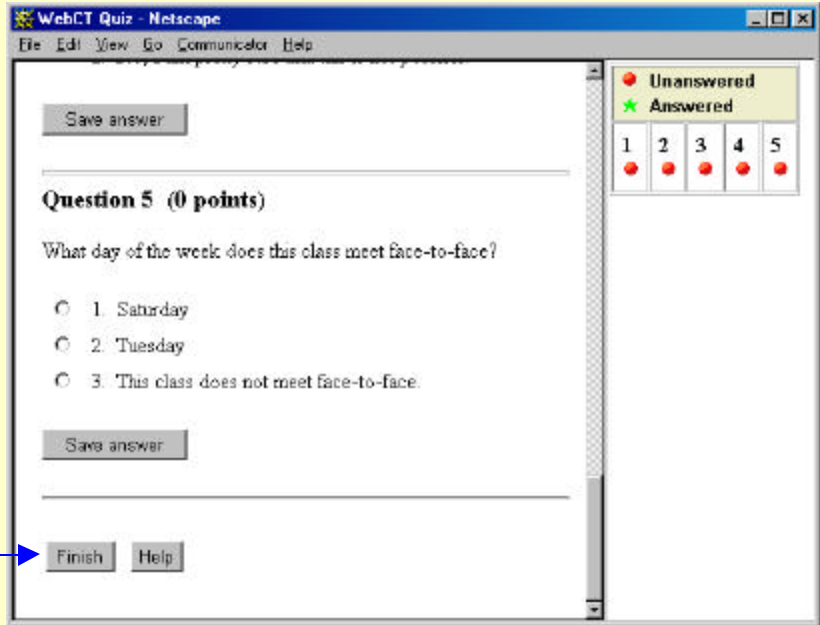
- Your response to quiz questions will depend on the type of question—for example the question listed to the right is a matching question with a pull-down list. You simply click on your choice of responses and then click on **Save answer**.



- For a multiple-choice question, you simply click on the radio button to the left of the response and then click **Save answer**.



- Upon completion of this quiz, remember to click on the button, labeled **Finish**.



- Notice the column at the far right side of the screen. This box will indicate which questions have been answered and unanswered.

