

Quick Reference: How to Log On to a WebCT 3.6 Course

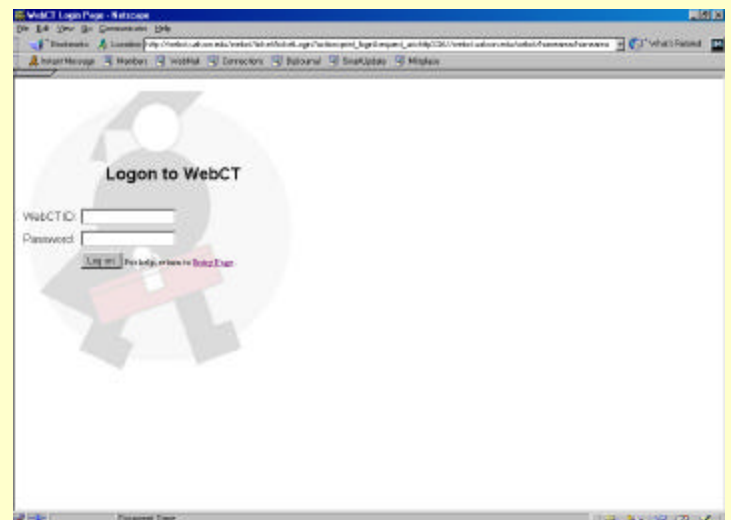
- Log onto your computer, connect to the internet, open a browser, and type in this URL:

<http://webct.uakron.edu>

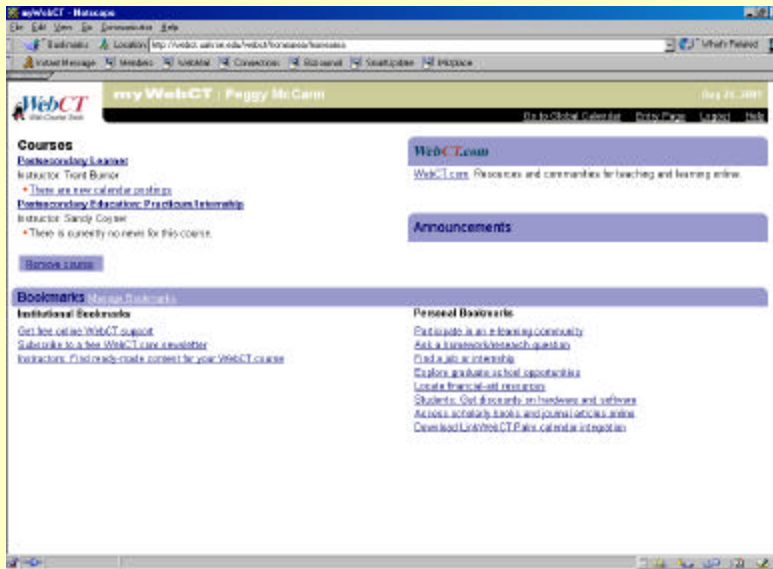
- You should see the **Welcome to WebCT** screen. Select **Log on to my WebCT**.



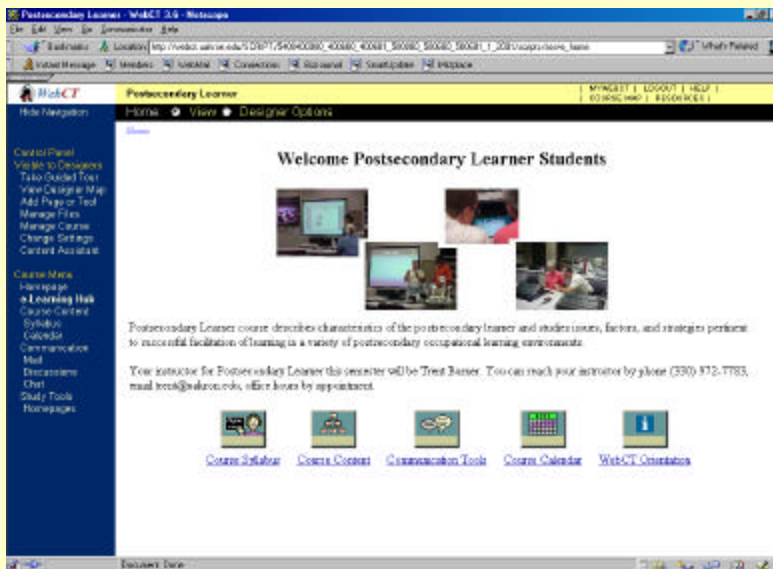
- You will be prompted to enter a **User Name and Password**.
- The *User Name* and *Password* are **case sensitive**. They must contain only numbers, letters, underscores ('_'), or periods. If you do use periods, they must not be the last character of your *User Name*.
- If you **DO** have a UANet ID,
 - User Name** UANet ID
(Everything before @uakron.edu)
 - Password**: The same password that you use for your email account on campus.
- If you **DO NOT** have a UANet ID, contact the Support Desk, 330.972.6888



The following screen should appear (my WebCT Page):



Select the course title by clicking once on the title. This will bring up a screen similar to the following (you won't have the designer options):



If you have a problem in connecting, it may be due to one of the following:

- You are not registered for this course.
- You used the wrong password. Your UANet ID and WebCt ID's are the same. REMEMBER THAT YOU ARE NO LONGER USING THE LAST FOUR DIGITS OF YOUR SOCIAL SECURITY NUMBER. THIS HAS CHANGED. Use the same password that you use for your campus email account.
- You entered the wrong ID (you use your alias, not your actual UANet ID).

Contact the Help Desk if you have tried all of these possibilities, 330.972.6888