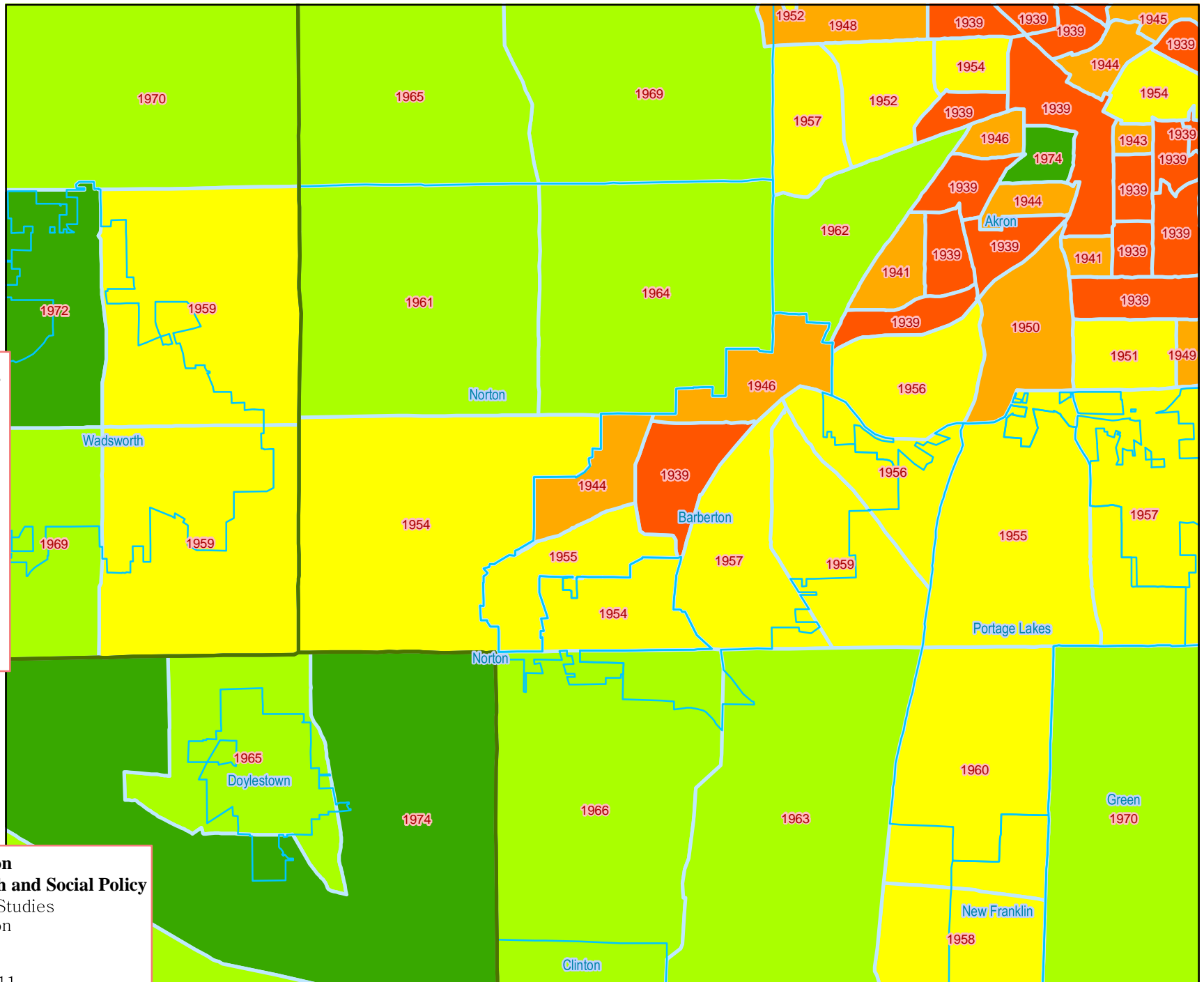
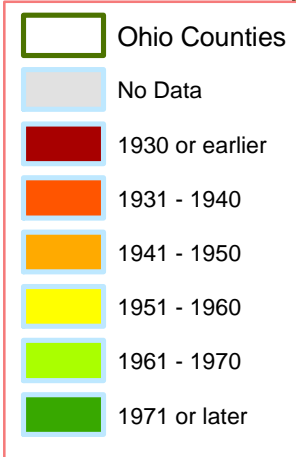


# Year Housing Unit Constructed (Median for tract)



## 2000 Census of Population and Housing Data



**The University of Akron**  
**The Institute for Health and Social Policy**  
 The Center for Policy Studies  
 The University of Akron  
 225 South Main St.  
 Polsky Bldg. Room 285  
 Akron, Ohio 44325-1911

