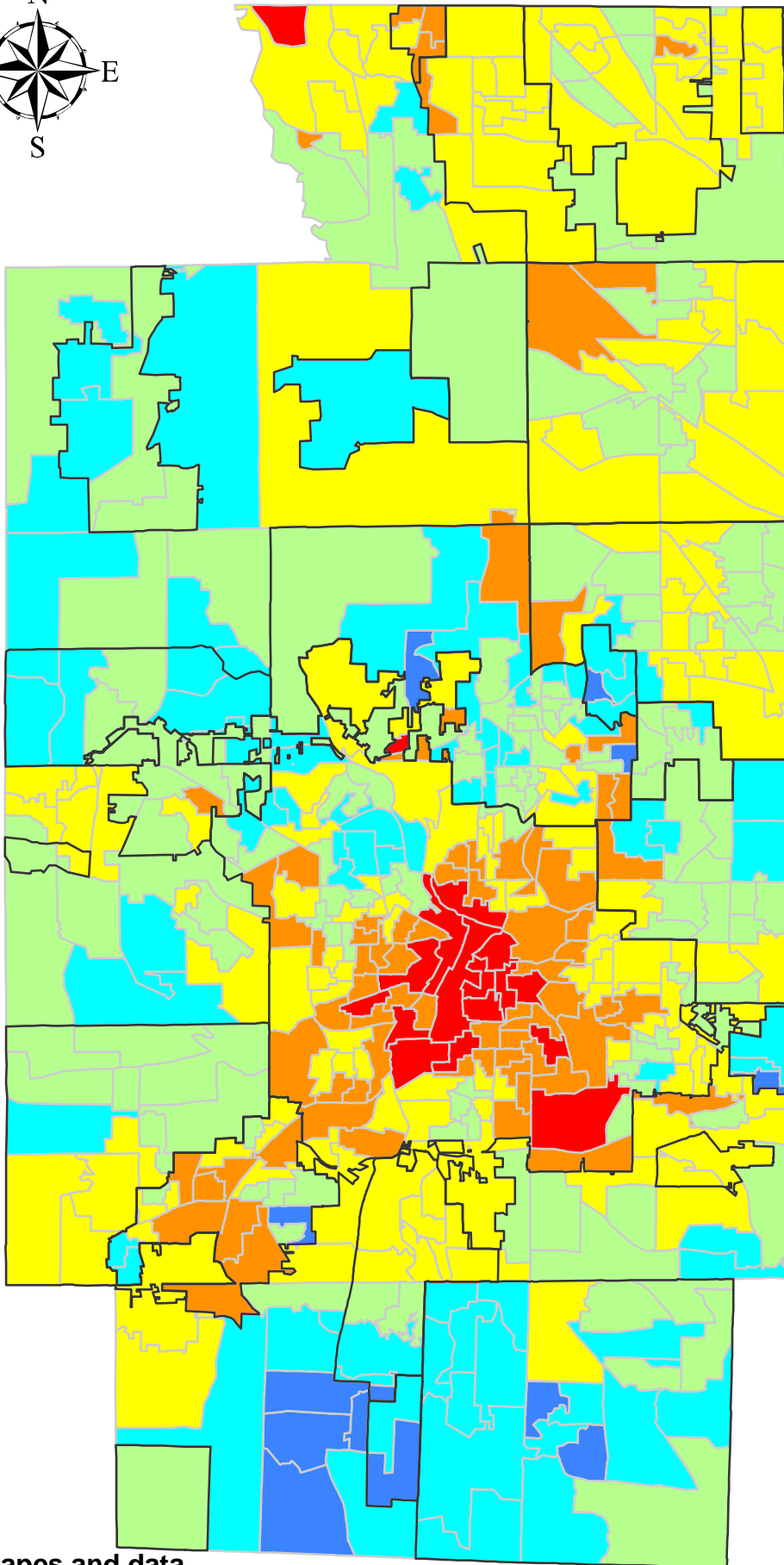
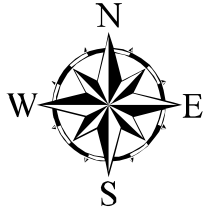


Summit County Election Results





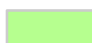





Voter Turnout

Ballots Issued
Number Registered

**General Election:
November 8th, 2005**

Summit Voter Legend

-  Summit Cities
-  Under 20% turnout
-  20% - 30% turnout
-  30% - 40% turnout
-  40% - 50% turnout
-  50% - 60% turnout
-  60% - 70% turnout
-  Over 70% turnout

Map shapes and data
courtesy of Summit
County Board of Elections.

0 1 2 4 6 8 Miles

The University of Akron The Center for Policy Studies

[an affiliated Center of:]
The Institute for Health and Social Policy
225 South Main St.
Polsky Bldg. Room 285
Akron, Ohio 44325-1911
Phone (330) 972-5111
<http://www.uakron.edu/centers/cps/>